

 Jasons.co.nz

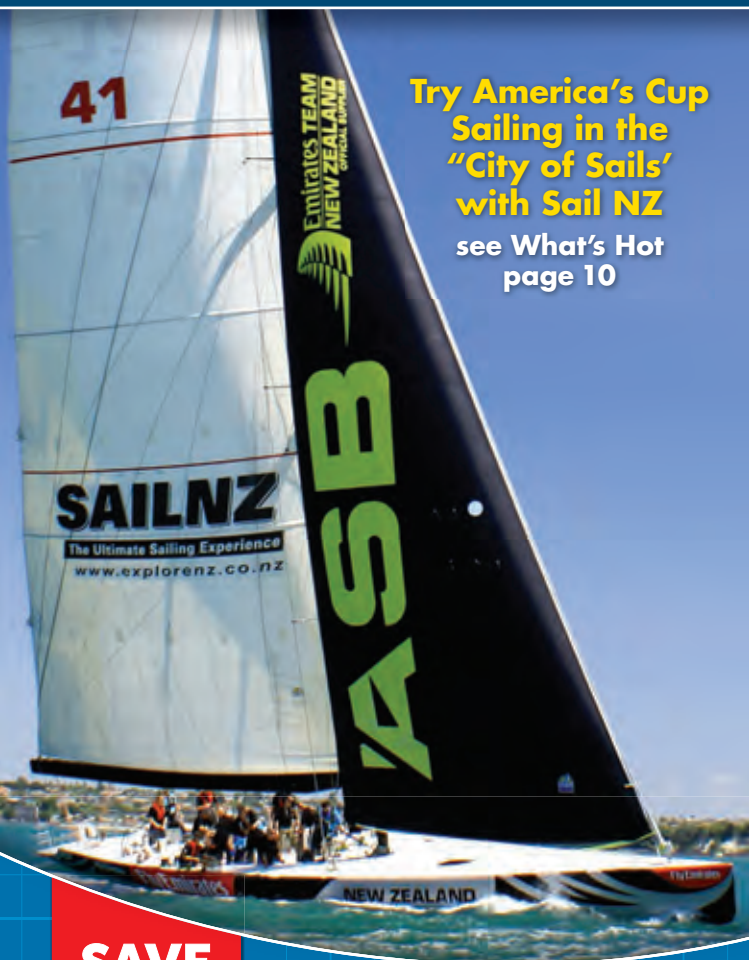
**FREE  
GUIDE**

# Auckland

FEBRUARY 2012

## What's On

VISITOR GUIDE WITH MAPS & VOUCHERS



Try America's Cup  
Sailing in the  
"City of Sails"  
with Sail NZ  
see What's Hot  
page 10

**SAVE  
\$\$\$**

see our fantastic  
voucher offers inside

*It's out there. Go find it.* Jasons.co.nz



Waiheke Sailing Experience  
©Explore NZ

## Waiheke Sailing Experience

Enjoy a scenic, relaxing sail down to Waiheke Island with Pride of Auckland. The jewel in the Hauraki Gulf Marine Park is home to world-renowned vineyards, olive groves and white sandy beaches. Get close to nature and discover the beauty of Waiheke Island, and catch the ferry back to Auckland.

- One way sailing transfer to Waiheke Island.
- Take the helm, trim the sails or relax and chat with your crew.
- Informative commentary about the region.
- Return ferry to Auckland with Fullers Auckland.
- Plenty of time to enjoy a vineyard tour, lunch or dinner.

The cruise costs \$85 per person.

Optional Exclusive Wine Tour: Upgrade to include a private Waiheke Wine Tour with Ananda Tours, for an additional \$135 per person including tasting at three vineyards.

For bookings and more information contact Explore NZ 0800 724 569, +64 9 359 5987. [www.explorenz.co.nz](http://www.explorenz.co.nz)

## Otara Markets

Come and enjoy a multicultural experience every Saturday 6am – 12noon you will find Maori and Polynesian arts, crafts, music and designer clothing, a wide range of fresh fruit and vegetables, ethnic food, clothing, jewellery, shoes, fashion accessories, giftware, used clothing, household goods plus much more! Otara Markets is the place to be on a Saturday morning. Whether you're meeting up with family and friends – it's the atmosphere you will remember. As you wander through the Market shopping for fresh, affordable fruit and vegetables or buying that special gift with a cultural difference - you can hear the sounds of the Pacific echoing in the background.

Newbury Street, Otara. 09 274 0830. [o.f.c@xtra.co.nz](mailto:o.f.c@xtra.co.nz)  
[www.otarafleamarket.co.nz](http://www.otarafleamarket.co.nz)



Splore 2012

## Splore 2012 – good times at the beach

Splore's amazing setting and unique vibe makes it an unmissable festival event. This summer over 40 international and Kiwi acts will descend on Splore's shores to mix it up at a festival that is like no other. Staged at the stunning Tapapakanga Regional Park, the beach front location is sublime and is designed for the audience to camp in many forms on site for a fully immersive three days.

Mixing it up at Splore will be the dancehall/reggae grooves of Gappy Ranks, the mesmerising vocals of Tiki Taane's acoustic show and the waiata good times from Fat Freddy's Hopepa's - The Yoots. Music, art and performance set in the most idyllic beachside location.

17-19 February - Tapapakanga Regional Park, one hour south east of Auckland city. All Ages. [www.1-night.co.nz](http://www.1-night.co.nz)

## Auckland Bridge Bungy

LEAVE AUCKLAND WITH NO REGRETS!

Auckland Harbour Bridge Bungy is brought to you by AJ Hackett Bungy – the Bungy originals! New Zealand's only ocean touch jump, touch it, get dunked, spot a whale or dolphin, it's completely up to you - or why not try the different jump styles available, ankle tie,



harness jump, tandem – you name it, they can do it! Every jumper receives an authentic Bungy Jump t-shirt, and serious bragging rights. Exclusive access to the Auckland Harbour Bridge, Bungy with the experts today!

0800 GO BUNGY [www.bungy.co.nz](http://www.bungy.co.nz)



Doggy Day Out

## Doggy Day Out

Get your dogs tail wagging with some canine socialising, a good bit of exercise and a treat at the end for good behaviour!

**1, 15 & 29 February**, Kiwi Esplanade (on leash), Kiwi Esplanade, Mangere Bridge.

**8 & 22 February**, Roseville Park (on & off leash), Totara Ave, Pukekohe.

**13 & 27 February**, Macleans Park (off leash), The Esplanade, Pakuranga (Southern end of Eastern Beach).

**20 February**, Totara Park (on and off leash), Wairere Rd, The Gardens, Manurewa.

5.30pm - 6.30pm. For more details email: [trevor.hey@aucklandcouncil.govt.nz](mailto:trevor.hey@aucklandcouncil.govt.nz)

## 14 February – Celebrate Valentine's Day at SKYCITY Auckland

Show your valentine you care and share a special dinner at one of the SKYCITY restaurants. dine by Peter Gordon is award-winning with a blend of Asian, Pacific and European cuisine. The Grill by Sean Connolly serves pasture fed meat and sustainable seafood, or if you want something a little more casual you can tuck yourself into a corner at Bellota and nibble on Spanish tapas and wine. Take dining to new heights at The Sky Tower restaurants. Enjoy succulent seafood specialities at The Observatory Buffet Restaurant or take in the views at Orbit Revolving Restaurant that turns one full rotation each hour. Impress your Valentine at SKYCITY this February. Bookings are essential.

SKYCITY Auckland, Corner Federal and Victoria Streets. 0800 SKYCITY, [www.skycityauckland.co.nz](http://www.skycityauckland.co.nz)



Auckland Jet Ski Tours

## Now available: Auckland Jet Ski tours!

Join us for a blast around the Harbour on your own jetski, follow our guide for a high octane adventure exploring the Hauraki gulf with Auckland's premier Jet company.

Auckland Jet Boat/Ski Tours is New Zealand's best adventure tour and a must, on your list of things to do in Auckland! Join us at the Viaduct Harbour in the heart of Downtown Auckland for a breathtaking 35-minute jet boat tour of the stunning Auckland City Coastline, Waitemata Harbour and Hauraki Gulf. Tours depart from 10am, 7 days a week. To avoid disappointment, we strongly recommend booking your jet boat adventure in advance, as availability can be limited.

Freephone 0508 255 382. Phone +64 9 281 4748.  
[www.aucklandjetboattours.co.nz](http://www.aucklandjetboattours.co.nz)

## Party all over Auckland VIP style with New Zealand's original Pub Crawl

Party from bar to bar around Auckland's vibrant nightlife with New Zealand's original pub crawl! We take you to 6 bars you get 6 free drinks, free photos, free food, massive prizes and huge drink discounts in 10 bars. All this for just \$25!

Guarantee yourself a great night like 50,000 people have with Big Night Out. Come alone or with your mates, everybody gets 6 free drinks, free food, free photos, huge drink discounts all night. Be in to win massive prizes every night, from Auckland's top activities, so.... you might get lucky! It's all within walking distance so no busses, no queuing just pure awesomeness. This is one epic night, see you on the D-floor.

Tues/Weds/Thurs/Fri/Sat. Meet 9pm sharp @ our first stop at QF Tavern.  
131 Queen Street. Phone 0800 BIG NIGHT (244 644) [www.bignightout.net.nz](http://www.bignightout.net.nz)





'Nature & Nurture' Art Exhibition, Cornwall Park  
©Fiona Cable



Marco d'Oggiono, Madonna and Child c. 1490 Tempera on panel  
Mackelvie Trust Collection, Auckland Art Gallery 'Iai o Tamaki, purchased with assistance from National Art Collection Fund, 1966



Ake Ake Kia Kaha  
©Auckland Museum



Playing with Light  
©MOTAT

## Exhibitions

### To 6 February, Playing with Light at MOTAT

'Playing with Light' is a fun filled, action packed travelling exhibition on now and only at MOTAT! Experience illuminating light, lasers and lenses like never before through a wide range of interactive and scientific activities for the whole family to enjoy! Daily 10am-4.30pm. 0800 MOTATNZ (0800 668 286).

Venue: MOTAT, 805 Great North Rd, Western Springs. [www.motat.org.nz](http://www.motat.org.nz).

### To 6 February, James Mackelvie's Gift to Auckland

Marvel at one of New Zealand's most important and generous art collections. This 19th century gentleman's enchanting collection includes fine arts, books, Chinese jade and a delightful group of snuffboxes. FREE entry.

Venue: Auckland Art Gallery, Cnr Kitchener and Wellesley Streets. [www.aucklandartgallery.com](http://www.aucklandartgallery.com)

### 11 February-4 March, 'Nature & Nurture' Art Exhibition

Sentient childhood icons, exquisitely draping fabrics and interrupted natural forms invite reflection.

Three journeys from painters Fiona Cable, Ruth Phipps and Helen Shale. Open daily 10am-4pm.

Venue: Cornwall Park Information Centre.



Mapping Auckland  
©Auckland Museum

### 15 February-30 June, Kermadec: Nine artists in the South Pacific

Kermadec showcases art works from nine leading contemporary artists as they voyaged from Auckland to Raoul Island in the Kermadec region then on to Tonga. Kermadec is produced and toured by The Pew Environment Group in association with Voyager Maritime Museum and Tauranga Art Gallery. Entry included in admission charge. Phone 09 373 0800.

Venue: Voyager New Zealand Maritime Museum, 149-159 Quay Street, Viaduct Harbour. [www.maritimemuseum.co.nz](http://www.maritimemuseum.co.nz).

### To 26 February, Ake Ake Kia Kaha – the spirit of Maori rugby

Ake Ake Kia Kaha – the spirit of Maori rugby offers a special insight into the world of Maori rugby and what it means to be a Maori rugby player. No bookings required. Open daily, 10am-5pm. Free.

Venue: Tamaki Gallery, Auckland Museum, Auckland Domain. [www.aucklandmuseum.com](http://www.aucklandmuseum.com)

### To 9 March, You are here: mapping Auckland

This exhibition of maps dating from the 1800s to today shows how Auckland has been planned, projected, organised, arranged and designed many times over. No bookings required. Free. Phone 09 306 7048. [www.aucklandmuseum.com](http://www.aucklandmuseum.com)

Venue: Auckland Museum, Auckland Domain.

### To 11 March, The Art of Transformation

In 2007, a group of paintings, sculptures and fables from the Gallery collection were placed 'Up for Adoption'. Discover works that found a generous sponsor a see – with careful restoration and sensitive reframing – they have been returned to their former glory. FREE entry.

Venue: Auckland Art Gallery, Cnr Kitchener and Wellesley Streets. [www.aucklandartgallery.com](http://www.aucklandartgallery.com)



Frances Hodgkins, **Colour and Light**  
©Auckland Art Gallery



John Pule in his studio



John Pule painting:  
Dazzling World



Voyager Museum

### To 11 March, Frances Hodgkins – Colour and Light

Experience Europe's sun-lit markets and bustling fishing ports through the eyes of New Zealand modernist, Frances Hodgkins. Displayed for the very first time, these paintings demonstrate why Britain claimed her as their own.

Venue: Auckland Art Gallery, Cnr Kitchener and Wellesley Streets. [www.aucklandartgallery.com](http://www.aucklandartgallery.com)

### To 25 March, John Pule: Hauaga (Arrivals)

Immerse yourself in contemporary Pacific culture in this survey of Pule's art. Featuring his hiapo-based paintings of the 1990s, the exhibition also includes cloud paintings and works on papers that embody Pule's dual practice as a writer and visual artist. FREE entry.

Venue: Auckland Art Gallery, Cnr Kitchener and Wellesley Streets. [www.aucklandartgallery.com](http://www.aucklandartgallery.com)

### To September, Whizz Bang Pop

Covering the period from the 1960s to the present day, Whizz Bang Pop will bring your senses roaring to life with its dynamic sculpture, painting, photographs, videos and prints. FREE entry.

Venue: Auckland Art Gallery, Cnr Kitchener and Wellesley Streets. [www.aucklandartgallery.com](http://www.aucklandartgallery.com)

### Daily, Ship Break, a Photographic Exhibition

A photographic Exhibition in Voyager Maritime Museum which covers the birth, life, death and eventual rebirth of an American Merchant ship. 09 373 0800.

Venue: Voyager New Zealand Maritime Museum, Corner Quay & Hobson Streets, Viaduct Harbour. [www.maritimemuseum.co.nz](http://www.maritimemuseum.co.nz)



Taratai - European Landfalls  
©Voyager New Zealand Maritime Museum

### Daily, Children of Tangaroa: Marine Mammals of Aotearoa

This temporary exhibition explores the stories of New Zealand's marine mammals, including Bryde's and humpback whales and Maui's and Hector's dolphins. Entry included in admission charge. 09 373 0800.

Venue: Voyager New Zealand Maritime Museum, 149-159 Quay Street, Viaduct Harbour. [www.maritimemuseum.co.nz](http://www.maritimemuseum.co.nz)

### Daily, European Landfalls

This redeveloped exhibition highlights the great journeys of some of Europe's most notable explorers. Phone 09 373 0800.

Venue: Voyager New Zealand Maritime Museum, 149-159 Quay Street, Viaduct Harbour. [www.maritimemuseum.co.nz](http://www.maritimemuseum.co.nz)

### Daily, A Teaspoon Per Cup And One For The Pot

Come along to MOTAT and learn more about the common 'cuppa' and its significance to New Zealand society. 10am-5pm. Phone 0800MOTATNZ (0800 668 286).

Venue: MOTAT, 805 Great North Rd, Western Springs. [www.motat.org.nz](http://www.motat.org.nz)

### Daily, I am the Last Tram

Take a stroll down 1950's Queen Street and transport yourself back to the decade that changed Auckland and New Zealand forever. 10am-5pm. Phone 0800MOTATNZ (0800 668 286).

Venue: MOTAT, 805 Great North Rd, Western Springs. [www.motat.org.nz](http://www.motat.org.nz)

### Daily, Signposts to Godzone

MOTAT's 'Kiwi-as' exhibition, Signposts to Godzone, gives visitors a slice of Kiwiana through the use of iconic symbols. 10am-5pm. Phone 0800MOTATNZ (0800 668 286).

Venue: MOTAT, 805 Great North Rd, Western Springs. [www.motat.org.nz](http://www.motat.org.nz)



Children of Tangaroa:  
Marine Mammals of  
Aotearoa  
©Voyager



The History of  
drinking tea at the  
Village Gallery  
©MOTAT



MOTAT



Blue Water Black Magic - A Tribute to Sir Peter Blake



Sir Edmund Hillary  
©Geoffrey Lee Martin



Pram Walks



The Great Planning Puzzle Weekend Experience  
©MOTAT

### Daily, 90° South – Sir Edmund Hillary and the NZ Antarctic Expedition 1956/58

Discover the story behind the first vehicular overland journey to the South Pole, led by Sir Edmund Hillary. 10am-5pm. Phone 0800 MOTATNZ (0800 668 286).

Venue: MOTAT, Logan Campbell Building, 805 Great North Road, Western Springs. [www.motat.org.nz](http://www.motat.org.nz)

### Daily, Blue Water Black Magic – A Tribute to Sir Peter Blake

Discover New Zealand's remarkable yachting success and explore the extraordinary life, work and achievements of New Zealand's finest yachtsman and one of our foremost environmentalists. Entry included in admission charge. Phone 09 373 0800.

Venue: Voyager New Zealand Maritime Museum, 149-159 Quay Street, Viaduct Harbour. [www.maritimemuseum.co.nz](http://www.maritimemuseum.co.nz)

## Family events

### Thursdays, Pram Walks

Come and join other mums and dads for a leisurely walk in the park. Stroll along the coastal and inland tracks of South and South East Auckland parks while enjoying the fresh air and exercise. 10am-11am.

Venue: 2 February, Rotary Walkway. 9 February, Wattle Downs Walkway. 16 February, Barry Curtis Park. 23 February, Kiwi Esplanade.

### Weekends, Land Ahoy- Weekend Trail

Grab a copy of the Land Ahoy Stamp and Discover activity sheet and see what wonders you can find within the Museum. Solve the riddles and discover some of our most fascinating objects! Activity is free with museum entry. Phone 09 373 0800.

Venue: Voyager New Zealand Maritime Museum, Corner Quay & Hobson Streets, Viaduct Harbour. [www.maritimemuseum.co.nz](http://www.maritimemuseum.co.nz)

### Weekends, The Great Planning Puzzle Weekend Experience

In this exciting new MOTAT Weekend Experience, the whole family must work as a team to solve the riddles, which relate to the essential planning elements for building a great city. 10am-5pm. 0800 MOTATNZ (0800 668 286).

Venue: MOTAT, Great North Road, Western Springs. [www.motat.org.nz](http://www.motat.org.nz)

### Weekends, Roll in Roll out – Activities in the weird & wonderful gallery

Kids can get creative in the Weird & Wonderful gallery to discover the sometimes wacky but always wonderful world of nature. No bookings required. 10.30am-12pm, 1.30pm-3pm. Gold coin.

Venue: Stevenson Discovery Centre, Auckland Museum, Tamaki Gallery, Auckland Domain, phone 306 7040, [www.aucklandmuseum.com](http://www.aucklandmuseum.com)

### Monday to Friday, I Spy for Under 5s

'I Spy' is a fun, hands-on experience especially designed for you and your under 5s, and is only available at MOTAT. Adults \$14, under 5s FREE. Bookings are NOT necessary. Phone 0800MOTATNZ (0800 668 286).

Venue: MOTAT, Great North Rd, Western Springs. [www.motat.org.nz](http://www.motat.org.nz)

### Daily, MOTAT's Tactile Dome

Kids will love the challenge of working their way through a labyrinth of obstacles in this purpose-built tunnel. Activities included in entry fee. 0800 MOTATNZ (0800 668 286).

Venue: MOTAT, Great North Road, Western Springs. [www.motat.org.nz](http://www.motat.org.nz)

## Music

### 3 February, Ronan Keating with special guest Sharon Corr

The charismatic multi-platinum Irish music superstar, will thrill his legions of New Zealand fans when he embarks on a tour this summer. 09 970 9700 or [www.ticketmaster.co.nz](http://www.ticketmaster.co.nz)

Venue: Vector Arena

### 3 February, Lloyd

Don't miss your chance to see this R&B superstar who will be performing all his hits plus tracks from his new album in this energy packed, must see live show! 0800 289 842. [www.buytickets.co.nz](http://www.buytickets.co.nz)

Venue: Civic Theatre.

### 3 February, Chinese New Year Concert

Celebrate the Year of the Dragon with dazzling pianist John Chen and the NZSO! Plus, rising star Perry So conducts Beethoven's popular Symphony No 6 – Pastoral. \$22-85. 7.30pm. Booking fees apply. 0800 BUY TICKETS. [www.the-edge.co.nz](http://www.the-edge.co.nz)

Venue: Auckland Town Hall. [www.nzso.co.nz](http://www.nzso.co.nz)



Weird & Wonderful Gallery  
Auckland Museum



Ronan Keating



Sharon Corr



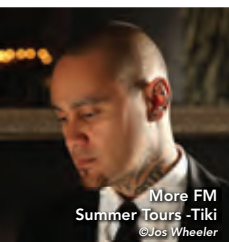
Chinese New Year Concert - John Chen  
© Jane Ussher



Music in the Auckland Botanic Gardens



Roxette



More FM Summer Tours - Tiki  
©Jos Wheeler



Game



Cornwell Park Summer Music



Sounds of Summer

### 5 February, Music in the Gardens

Claim back a lazy Sunday and enjoy free music in the gardens between 11.30am-2.30pm: Molten String Quartet. Bring a picnic and enjoy the day. Phone 09 267 1457.

Venue: Auckland Botanic Gardens, 102 Hill Road, Manurewa, [www.aucklandbotanicgardens.co.nz](http://www.aucklandbotanicgardens.co.nz)

### 11 February, Roxette with special guests Dragon

Now is the time to call your friends, grab your tickets, listen to your heart, get dressed for success and join the joyride! Phone 0800-111-999. [www.ticketmaster.co.nz](http://www.ticketmaster.co.nz)

Venue: Vector Arena.

### 11 February, More FM Summer Vineyard Tour

Coming to a town near you, a great day out with fine wine and good food, just bring a friend! \$79. 0800 289 842. [www.ticketek.co.nz](http://www.ticketek.co.nz)

Venue: Turanga Creek, Auckland. [www.summervineyardtour.co.nz](http://www.summervineyardtour.co.nz)

### 18 February, NZSO National Youth Orchestra

Sixty young musicians with talent to spare! Conducted by New Zealander Tecwyn Evans and featuring cellist Santiago Cañón Valencia for Shostakovich's Cello Concerto No.1. \$25 Adults \$12 Child. 8pm. Booking fees apply. 0800 BUY TICKETS. [www.the-edge.co.nz](http://www.the-edge.co.nz)

Venue: Auckland Town Hall. [www.nzso.co.nz](http://www.nzso.co.nz)

### 18, 20, 22, 23 February, Roger Waters The Wall

Roger Waters and his stunning band, performing the album in its entirety – including the anthem Another Brick In The Wall, rock classic Comfortably Numb, Mother, Hey You and In the Flesh. 09 970-9700 or [www.ticketmaster.co.nz](http://www.ticketmaster.co.nz)

Venue: Vector Arena.



Roger Waters – The Wall

### 18 February, Sounds of Summer

A superb selection of House music, Live acts, Funk, Soul, Jazz, Old school Hip Hop, RnB and more will be combined with food, refreshments and all sorts of live summery sounds, giving you a seaside summer party experience that you will never forget. Starring Jonathan Ulysses (Ibiza). 1pm-1am. R19. +64 9 361 1000. [www.iticket.co.nz](http://www.iticket.co.nz)

Venue: Masonic Tavern, Devonport Waterfront. [www.highlifeentertainment.co.nz](http://www.highlifeentertainment.co.nz)

### To 24 February, Showstoppers!

Every show has a showstopper, the most popular song that stops the show and everyone wants to hear! We proudly present a show packed with those showstoppers. To book call Operatunity toll free on 0508 266 237. [bookings@operatunity.co.nz](mailto:bookings@operatunity.co.nz)

Venue: In 24 Venues from Whangarei to Invercargill. [www.operatunity.co.nz](http://www.operatunity.co.nz)

### 25 February, Game with special guest Savage

Two time Grammy nominated Hip Hop legend GAME is coming to Vector Arena as part of his The R.E.D. Album tour. Game will be performing all his hits, hits that show why he is considered instrumental in reviving the West Coast hip hop scene – definitely a must-see for all his fans! Phone 0800 111 999. [www.ticketmaster.co.nz](http://www.ticketmaster.co.nz)

Venue: Vector Arena.

### Every Sunday to 25 March, Highlife Beach Boutique Sunday Sessions

Celebrating all that is Summer. Come along and kick it, listen to some music, have some drinks, enjoy great Kiwi food and take advantage of the sun at a premium location less than 1 minute from Takapuna Beach. These parties are free entry no cover charge! 3pm till late. [www.highlifeentertainment.co.nz](http://www.highlifeentertainment.co.nz)

Venue: Massimo, Takapuna Beach.

### Every Sunday in February, Cornwall Park Summer Music Concert Series

Join in the fun, bring along a picnic and enjoy the relaxed atmosphere of our varied music concerts at the Band Rotunda at Cornwall Park. Between 1-3pm. Free.

Venue: Cornwall Park Band Rotunda.



Valentine's Day at MOTAT

## Special Events

### 5 & 19 February, Sunday sailings on Breeze

Climb aboard Breeze and experience a truly authentic sailing on Auckland's sparkling Waitemata Harbour. \$35 per person, from 1.00-3.30pm. Sailing trips suitable for passengers 12 years and older. Phone 09 373 0800.

Venue: Voyager New Zealand Maritime Museum, 149-159 Quay Street, Viaduct Harbour. [www.maritimemuseum.co.nz](http://www.maritimemuseum.co.nz)

### 5 & 19 February, SS Puke steam boat rides

Take a ride on New Zealand's oldest working steam vessel, the SS Puke. Putter about the Viaduct Harbour and hear the whistle blow. 15 minute steam trips run from 11am-3pm & cost \$2 for adults and \$1 for children. Phone 09 373 0800.

Venue: Tidal Steps, Karanga Plaza, Viaduct Harbour, next to the Viaduct Events Centre. [www.maritimemuseum.co.nz](http://www.maritimemuseum.co.nz).

### To 12 February, Sculpture in the Gardens

21 large scale sculptures by top New Zealand artists on a 2km garden trail. It also features an exhibition of small scale indoor works and a concept gallery display. Don't miss this great event. Phone 09 267 1457.

Venue: Auckland Botanic Gardens, 102 Hill Road, Manurewa. [www.aucklandbotanicgardens.co.nz](http://www.aucklandbotanicgardens.co.nz)

### 12 February 2011, Closing Function for Sculpture in the Gardens

Your final chance to view the outdoor sculptures and vote for your favourite. Join us for the day and enjoy a variety of music in the gardens from 11.30am plus guided walks of the sculpture trail. At 4pm we will announce the winner of the Friends Peoples Choice Award and competition winners followed by 2 hours of music celebration to close the show. Bring a picnic or join us in the café. Phone 09 267 1457.

Venue: Auckland Botanic Gardens, 102 Hill Road, Manurewa. [www.aucklandbotanicgardens.co.nz](http://www.aucklandbotanicgardens.co.nz)

### 14 February, Valentine's Day

Treat your loved one to a truly unique Valentine's Day celebration. Enjoy a romantic picnic amid the fairy lights in MOTAT's Victorian Village. Tickets are strictly limited, bookings essential. Visit our website for more info. 0800 MOTATNZ (0800 668 286).

Venue: MOTAT, 805 Great North Road, Western Springs. [www.motat.org.nz](http://www.motat.org.nz)

### Wednesdays, Auckland Botanic Gardens – Guided Walk

Meet at Huakaiwaka Visitor Centre at 1pm and enjoy a free, mid-week walk with a member of the Gardens staff. On Sundays, ride the Wiri rambler train and explore the garden's beautiful collections.

Venue: Auckland Botanic Gardens, 102 Hill Road, Manurewa, 09 267 1457, [www.aucklandbotanicgardens.co.nz](http://www.aucklandbotanicgardens.co.nz)

### Wednesday-Sunday, Ted Ashby harbour sailings

Experience Auckland's Waitemata Harbour as our forefathers did 100 years ago and then visit the museum galleries for free. Voyager's heritage sailing scow, Ted Ashby, departs twice a day. Adults \$29, children \$14.50. Phone 09 373 0800.

Venue: Voyager New Zealand Maritime Museum, 149-159 Quay Street, Viaduct Harbour. [www.maritimemuseum.co.nz](http://www.maritimemuseum.co.nz)

### Daily, Maori Cultural Performance and guided tour

Enjoy a vibrant and entertaining glimpse of Maori culture, culminating in a high-energy haka – New Zealand's famous war dance, followed by a guided tour of the Maori Gallery. Charges apply – see discount voucher centre pages.

Venue: Auckland Museum, Auckland Domain, phone 306 7048, [www.aucklandmuseum.com](http://www.aucklandmuseum.com)

## Sports

### 13 February, Have a Go Petanque

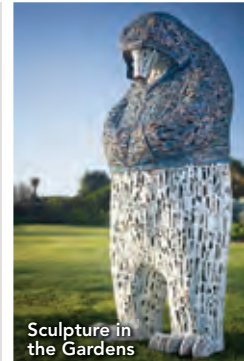
Petanque is a French style game of bowls involving throwing small boules at a jack with few rules. This popular social game is played throughout New Zealand by young and old alike. 11am-12pm. FREE.

Venue: Cockle Bay Reserve, 17 Shelly Beach Parade, Howick.

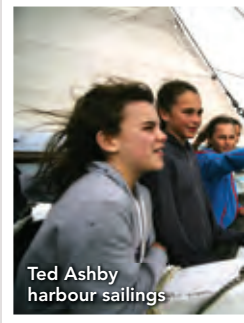
### 15 February, Barfoot & Thompson Twilight Summer Series

Six fast-paced races, non-stop action on and off the track all topped off with a wicked party - this is summer, this is the twilight races! Prices start from just \$10pp. From 4.30pm. Phone 09 524 4069.

Venue: Ellerslie Racecourse, 80 Ascot Avenue, Remuera. [www.ellerslie.co.nz](http://www.ellerslie.co.nz)



Sculpture in the Gardens



Ted Ashby harbour sailings



Maori Cultural Performance and Tour



Barfoot &amp; Thompson Twilight Summer Series

**21 & 28 February, Kids Triathlon Training**

If you are competing in a triathlon or duathlon this year come and join us for a session to help you along with your training. Bring your bike! 4-5pm. FREE.

Venue: Lloyd Elsmore Park, meet at the cricket club carpark off Bell Road.

**Fridays, Rock Up Rock Wall**

Free rock climbing in your local park. Suitable for all ages and abilities. 3.30pm - 5.30pm. FREE.

**3 February**, Ray Small Park, corner of Ray Small Drive & Mossford Green, Papakura.

**10 February**, Eastern Beach, southern end of The Esplanade, Pakuranga.

**17 February**, Barry Curtis Park, corner of Stancombe Rd & Chapel Road, Botany.

**24 February**, Orange wood Park, Orangewood Drive, Howick.

**2 March**, Maraetai Park, Maraetai Drive, Maraetai.

**Sundays, Coastal Pathways by Bike**

Come and explore the extensive network of pathways in Auckland south parks. With great scenery and wide paving, this is a chance to do some off road recreational cycling and sightseeing. Join your local Park Ranger for a leisurely ride and discover parks by bike. 10am-11am. FREE.

**12 February**, Beachlands to Maraetai, meet at Maraetai Park, Maraetai Drive, Maraetai.

**19 February**, Rotary Walkway, meet at 105 Prince Regent Drive, Pakuranga.

**26 February**, Kiwi Esplanade, meet on the corner of Kiwi Esplanade & Coronation Road, Mangere Bridge.

**To 1 March, BLACKCAPS v Zimbabwe and South Africa 2011/2012 Tour**

New Zealand and the BLACKCAPs will host the Zimbabwe and South African cricket team in the summer of 2011/2012. [www.blackcaps.co.nz/international/blackcaps/2/schedule.aspx](http://www.blackcaps.co.nz/international/blackcaps/2/schedule.aspx)

**Theatre, Dance & Comedy****17-25 February, New Performance Festival**

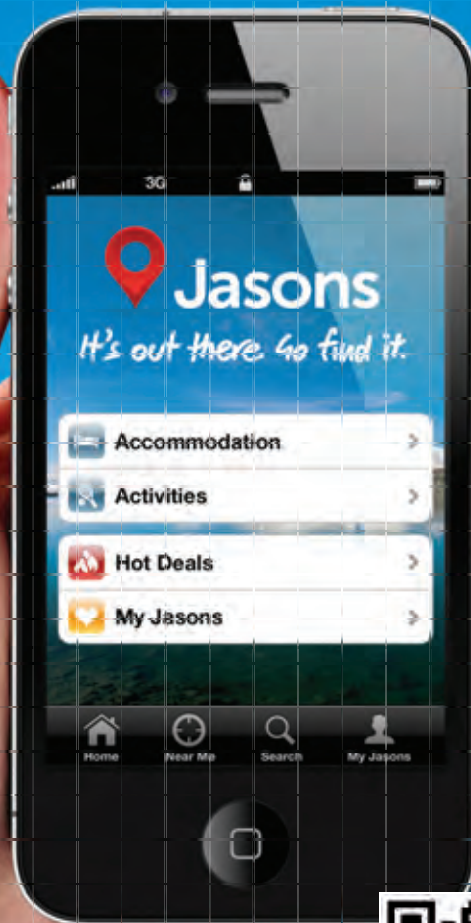
Put reality aside and immerse yourself in a genre-blurring 8 day festival. This is where the status quo of theatre is threatened and the next generation of local and international performing artists call out to Auckland. [www.npfestival.co.nz](http://www.npfestival.co.nz)



2 Dimensional Life of Her Image  
New Performance Festival

# Search it. Plan it. Book it.

Download Jasons **FREE** iPhone app!



Available on the  
**App Store**

It's out there. Go find it. **Jasons.co.nz**